

# L4

LATEST · LIVE · LAND · FOR PEOPLE

**L4**

House Series

## HOUSE DESIGN 1

COMPACT HOUSE / MID-SIZED HOUSE / LARGE-SIZED HOUSE  
LOFT & PENTHOUSE / TOWNHOUSE & APARTMENT HOUSE



# Rioteiland House

Design: Hans van Heeswijk Architects | Design team: Hans van Heeswijk, Richard Gouwermer, Rob Huis, Richard Teeling | Client: Hans van Heeswijk Architects | Location: Amsterdam, The Netherlands | Total area: 275m<sup>2</sup> | Completion: 2011 | Photo: Wim van Oort / Studio Oost



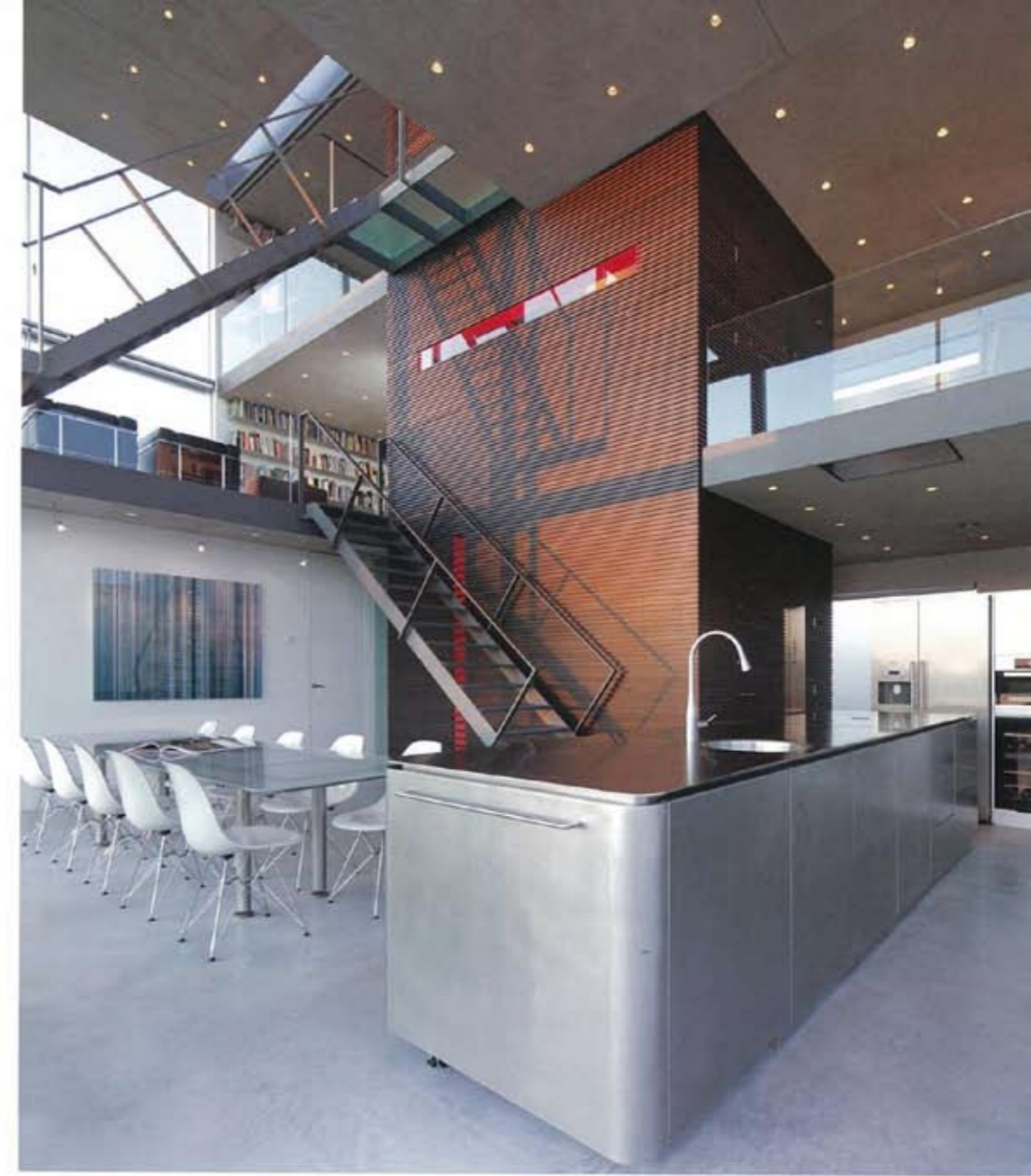
{ The house on Rioteiland(Reed Island) East has home automation, also called domotics. That is to say that all the electronic applications in this property can be controlled from a central computer. On each floor there is a control panel with a touchscreen. It is also possible with the aid of an application to control this at a distance. The controlled applications include heating, ventilation, lighting and darkening of the house but also the alarm, intercom, network and the like are controlled from this point. The front door is electronically operated and connected to the intercom. This makes it possible that the front door can be opened from each floor. It also makes it possible to just press 1 button and simply walk in with both hands full. A heat pump that is connected to a source-closed bottom is used for heating and cooling of all compartments. On the roof are solar panels(photovoltaic cells). These panels generate energy that is used for heating and cooling of the dwelling. The lighting is connected to the automation. Through various scenes, the house can be preset with only 1 touch into several atmospheres. In addition, areas that are not used stay turned off. Beside the front door is a sweep switch that allows the residents to exit the house and turn the lights in the house off with one button all equipment. }

Text by Hans van Heeswijk Architects

**Hans van Heeswijk Architects** is a studio for architecture, planning and design led by Hans van Heeswijk and Dick de Gunst, and has currently employed 23 people. The office is based on a beautiful location in Amsterdam. Hans van Heeswijk architects was founded in 1985. From that time the firm has worked on a large number of diverse projects. These include : offices(conversions and new-build), industrial buildings, mixed-use buildings, public buildings, housing, interior design and furniture, civil engineering works, such as bridges, substations and tunnels, street furniture.







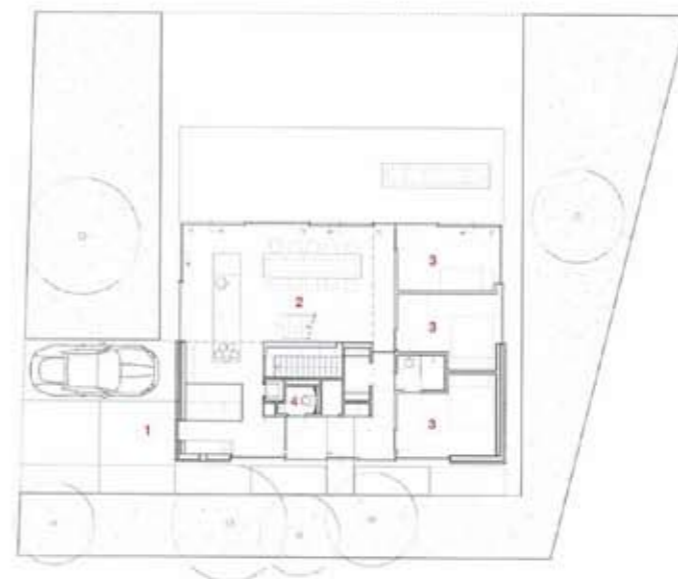
SECTION







- 1 ENTRANCE
- 2 KITCHEN
- 3 BEDROOM
- 4 TOILET
- 5 BATHROOM
- 6 BALCONY



GROUND FLOOR PLAN



2ND FLOOR PLAN